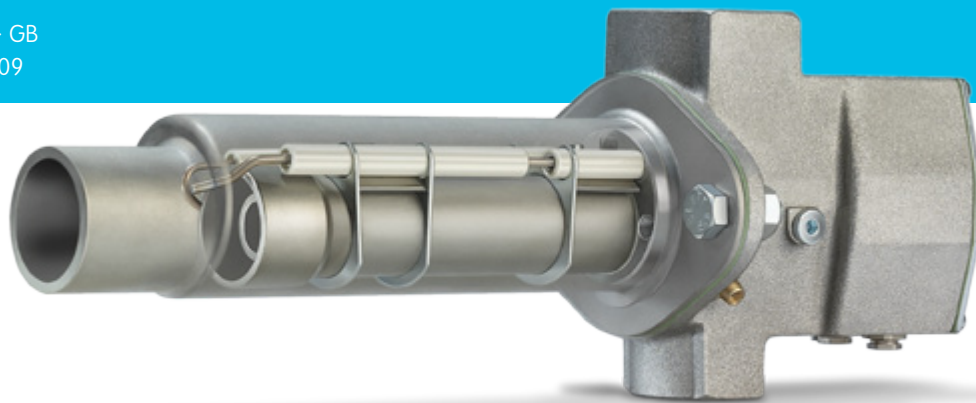


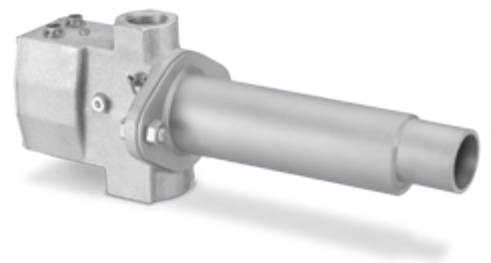
Pilot burner for gas ZSI with splash-proof connection housing

Product brochure · GB
7.1.2.6 Edition 09.09

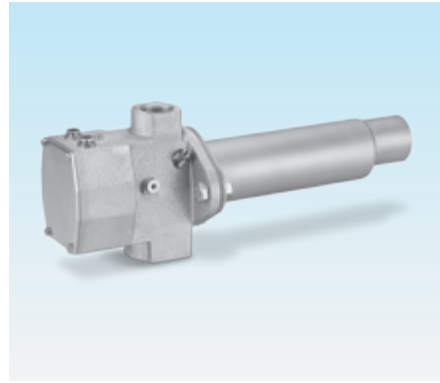
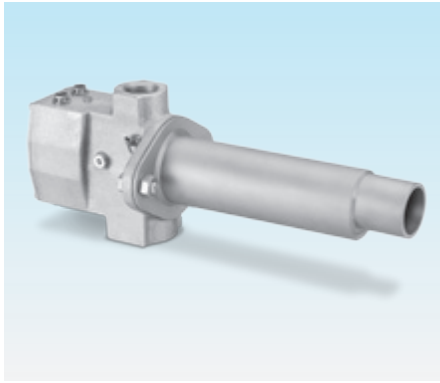


krom
schroder

- Robust design for a long service life
- Diverse possible applications thanks to splash-proof connection housing
- Simple conversion of gas types from natural gas to LPG or town gas
- Reliable electrical ignition and safe flame control thanks to ionisation control
- Can also be used for direct heating
- Rated capacity 50 kW



elster
Kromschroeder



Pilot burner ZSI with splash-proof connection housing

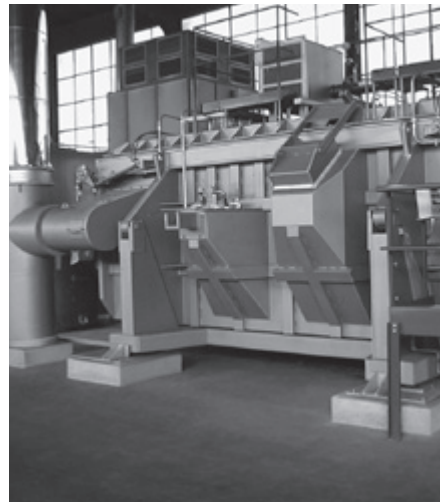
Application

For use as a pilot burner for safe ignition of main burners in industrial furnaces and firing systems in the iron and steel industries in the precious, non-ferrous and light metal sector, as well as in the plastics, fibre and paper industries.

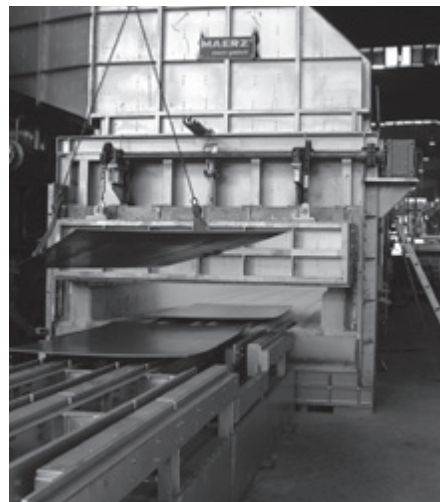
Thanks to its high rated capacity of 50 kW, pilot burner ZSI can also be used for direct heating, e.g. for heat treatment of metals or as a manual burner in abattoirs.

The robust design ensures a long service life. The housing is splash-proof.

The pilot burner is supplied for operation with natural gas. It can easily be converted for operation with LPG or town gas.

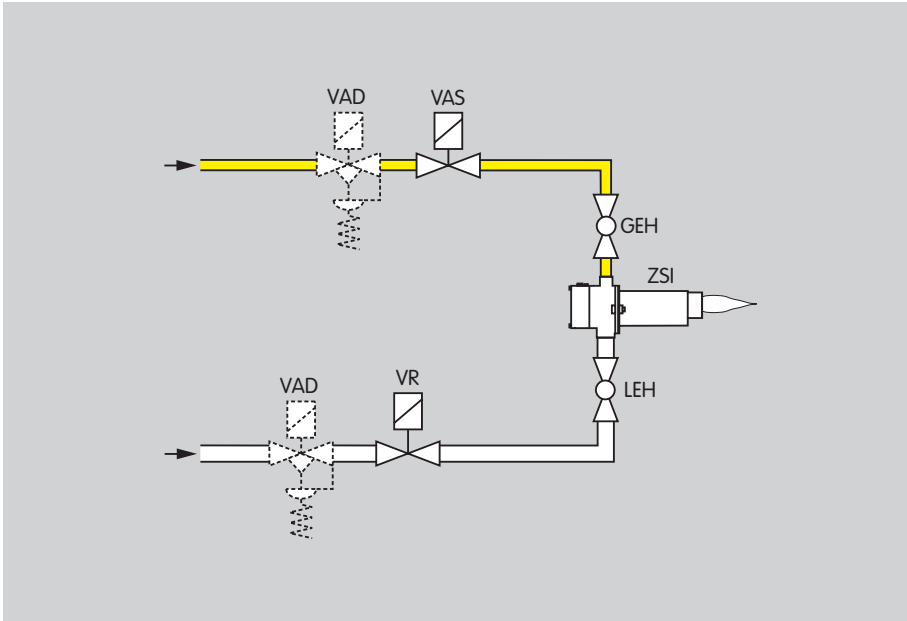


Aluminium shaft melting furnace



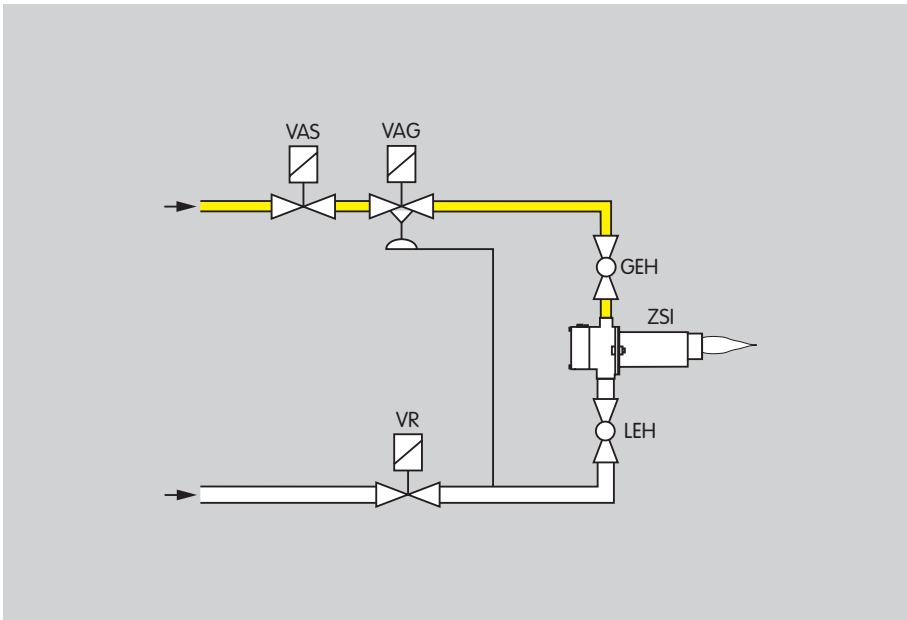
Heat treatment furnace for sheet steel

Examples of application



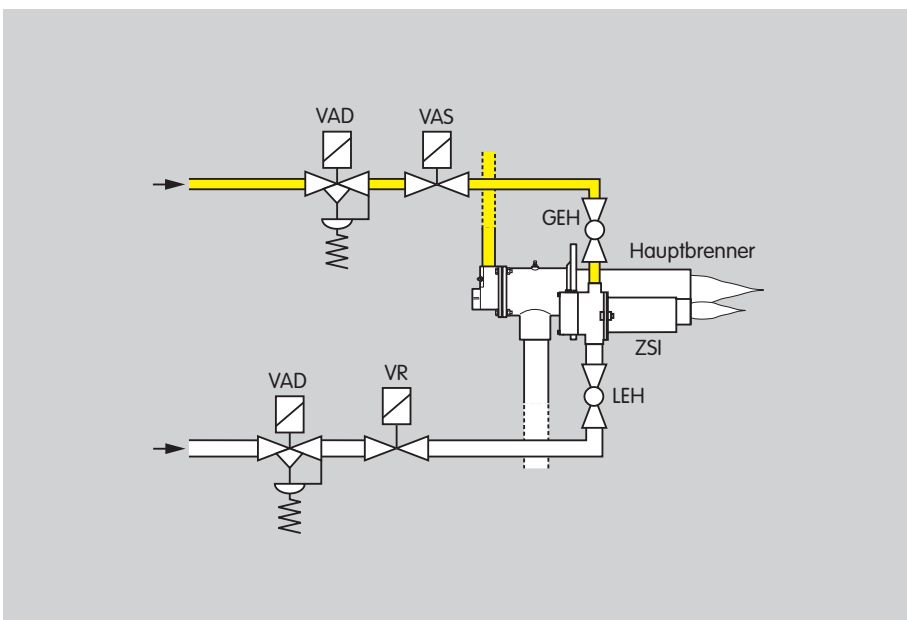
Staged On/Off control

The gas/air mixture is set using the gas adjusting cock GEH and the air adjusting cock LEH. For a constant mixture of gas and air (lambda), one pressure regulator per burner is used on the gas and air sides.



Staged control with pneumatic ratio control system

The pneumatic ratio control system offers maximum safety thanks to an air deficiency cut-out, with a constant lambda value being maintained while the air pressure varies.



Pilot burner with staged control

Install the pilot burner so that reliable ignition of the main burner is guaranteed.

Technical data

Types of gas: natural gas, LPG (gaseous), town gas.

Rated capacity: 50 kW, max. 60 kW.

Max. ambient temperature:

flame tube: < 1000°C,

around the burner tube: 500°C.

Flame control: ionisation electrode.

Ignition: direct, electrical.

Ignition and ionisation electrode:

made of heat-resistant special alloy.

Housing:

AlSi, splash-proof IP 54.

Burner and flame tube:

material 1.4841.

Gas connection:

Rp 1, air connection: Rp 1½.

Gas/air pressure at rated capacity = 50 kW,

$\lambda = 1$:

	Gas pressure [mbar]	Air pressure [mbar]
Natural gas	4.2	25
LPG	3.6	19
Town gas	10	17

Flame length at rated capacity (50 kW):

approx. 50 cm.

Control: On/Off.

Maintenance cycles

Twice per year, but if the media are highly contaminated, this interval should be reduced.

Selection

	200	300	400	500	600	700	800	/50
ZSI	●	●	●	●	●	●	●	●

● = standard, ○ = available

Order example

ZSI 200/50

Type code

Code	Description
ZSI	Pilot burner with forced air supply
	Length of burner tube [mm]:
200	200
300	300
400	400
500	500
600	600
700	700
800	800
	Length of flame tube [mm]:
/50	50

Detailed information on this product

www.docuthek.com

Contact

www.kromschroeder.com → Sales

Elster GmbH
Postfach 2809 · 49018 Osnabrück
Strothweg 1 · 49504 Lotte (Büren)
Germany

T +49 541 1214-0
F +49 541 1214-370
info@kromschroeder.com
www.kromschroeder.com
www.elster.com

Kromschroeder, a product
brand of the Elster Group

**krom
schroeder**

We reserve the right to make technical modifications
in the interests of progress.

Copyright © 2007 Elster Group
All rights reserved.